

MultiSportManager Step-by-step manual

MultiSportManager (MSM) is program for multisport races and hiking events.

- Programm: **MULTISPORTMANAGER**
- Versioon: 0.0 2012.06.xxx
- Kuupäev: 08.03.2012 (Tarmo Klaar)
- Koduleht: <http://www.tak-soft.com>

Features

- Unlimited number of classes with subclasses.
- Supporting SPORTident punching system and all SPORTident cards.
- Unlimited number of controls with different value points.
- For long events (up to 7 days)
- Possible to use many readout computers in local network
- All results lists are HTML files
- Internal SQL database

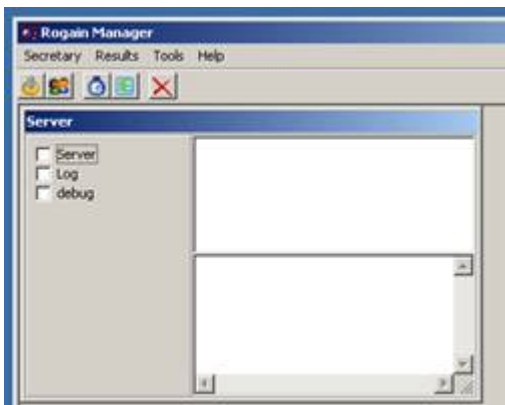
Installation

Download latest version from www.tak-soft.com. Run Setup_ROM.exe and follow instructions.

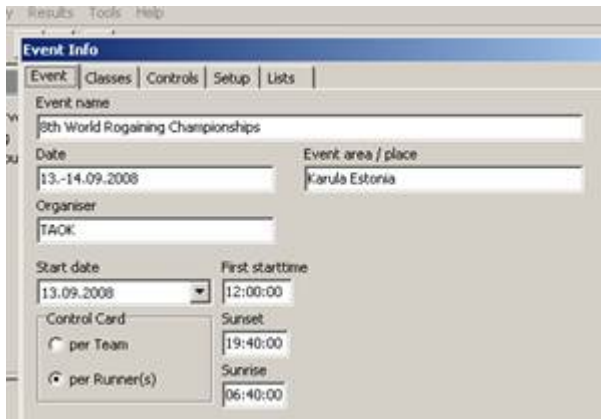
After installation, copy license file (rom_licence.lic) to program folder.

Before event

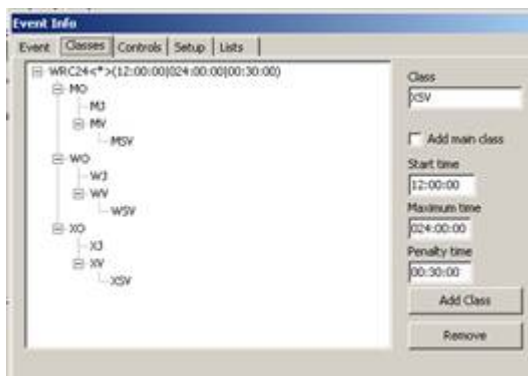
- Start program (rogainmanager.exe) and select event folder. If new events, program will ask to create new folder.



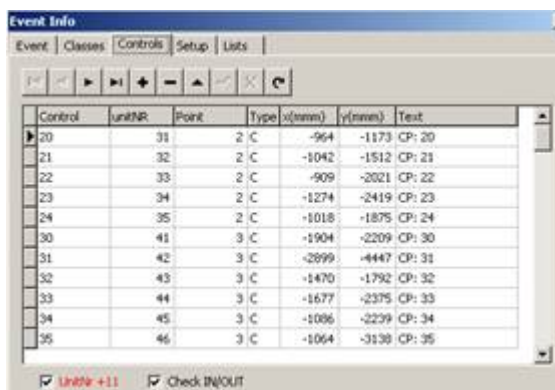
- Prepare event information : Secretary → Event setup (F2)



- Event - common information about event
- Classes - define classes

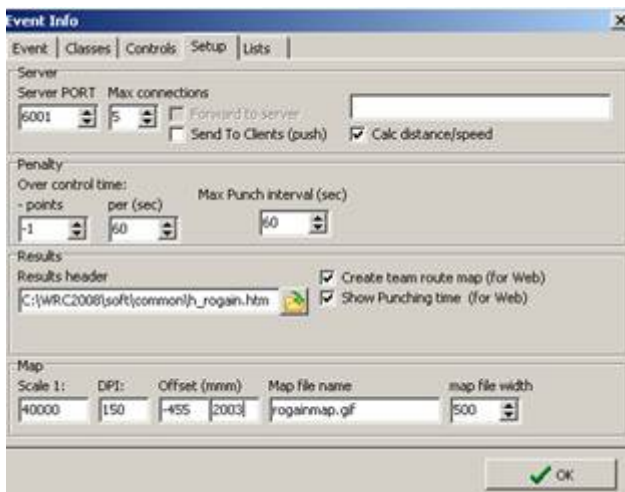


- Add main class(es) - you had to define at least one main class.
Enter Class name and mark "Add main class" checkbox,
 - Start time - Class start time
 - Maximum time - Class maximum race time without penalty time.
 - Penalty time - Define class penalty time - when team gets penalty points and not disqualified.
 - Press Add Class button to add new class.
- Add sub classes
 - Select from class tree upper level class, type Class name and press Add Class button
- Extra classes
 - If there are special pricing for special teams in event, define here extra classes.
- Controls - define controls



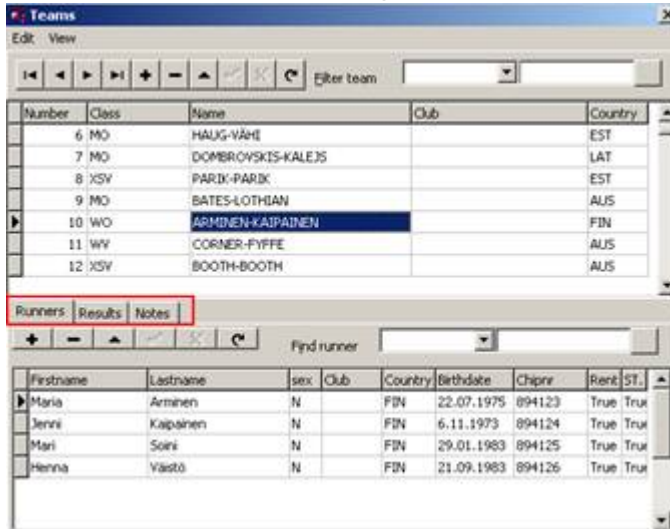
- In control table are following fields:
 - Control - control number or special control

- unitNR – number programmed into control station (SI station)
- Point – value points
- Type – control type
 - C – ordinary control
 - I- check-in control
 - O- check-out control
 - W- water or service control
 - S- start control
 - F- finish control
- x(mmm) – control position on map by x mean (1/10mm)
- y(mmm) – control position on map by y mean (1/10mm)
- Text – control description in reports
- Import from OCAD-9 (XML format)
 - Right click on controls table and choose Import OCAD9. Select OCAD XML file.
- To create controls list, do right click on controls table and select Create.
- To print out controls list, select from popup menu Print.
- Setup – program settings



- Server
 - Server PORT – server TCP/IP port
 - Max connections – how many clients could connect
 - Calc distance/speed – if this is marked and control coordinates are defined, then server will calculate distances between controls and send to client
- Penalty
 - - points : how many penalty points team will get if they are over maximum time in course
 - Per (sec) – penalty points per second
 - Max punch interval - if every team member had to punch within limited time frame then here define maximum punching interval in seconds. If only one chip per team or time frame is not defined, type -1.
- Results
 - Choose header file for results. Program has 2 sample header files in common folder (h_rogain.htm and h_rogaindynamic.htm). You may customise these HTML files and CSS files in event results folders to change lookout of results (colors, fonts etc).
 - Create team route map (for web) – Draw teams route choice into team details report (web report) as image
 - Show Punching time (for web) – add punching time to team details results
- Map - Map parameters:
 - Scale – map scale 1: xxxxxx

- DPI - (gif or jpg file) map density (Dot per Inch).
- Offset - x;y start position on map in pixels
- Map file name. Map had to be in event folder.
- Maps file width - team's route choice image width.
- List - Lists in programs
- List of countries.
- Add or edit teams : Secretary → Teams (F3)



- Import (from Edit menu) - imports teams and members from CSV file. Delimiter is “;” or “,”. Date format had to be localised.

CSV file format:

teamEntryID; TeamName; Club; Class; Firstname; LastName; Birthday(d.m.yyyy); Sex; Chip nr;Country;{SubClass;}

```
"1";"MenInBlack";;"MO";"Juhan";"Forest";"26.7.1979";"M";;"FIN";  
"1";"MenInBlack";;"MO";"Tom";"Storm";"30.7.1981";"M";"4654654";"GBR";
```

- Add manually
 - Press + button and fill team data. To save record press Post edit button.
 - On Runners tab press + button and fill member information. Add all team members. Rent - type True if member have rented cards ST. - started
- Import chips (Edit menu) - for assigning rental chips (SI cards).
 - Select file where chip numbers are described (text file, one card number per line)
 - Program will assign chips for every runner or team if chip is not assigned before.
- Check Data (Edit menu)
 - Select check file (*.rmchk files from Common folder) and select what to check. Program will generate report if there are errors.
- View team results
 - To view Team total results select “Results” tab. To recalculate team result, press Calculate Team button.
 - To view Team visited controls select from View menu Team controls (CTRL+T)
 - To view Team controls and status - select from View menu Team Result (CTRL+R)
 - To view and edit member controls select runner row and then from View menu Runner controls (CTRL+U)
- Print start and checklists
 - Select Reports (F6) and select main class(es).

Select report type:

- Start lists (Teams) – team names without members
- Start list (with members) – teams start list with members
- Check list – checklist for organisers with team chip numbers.
- Export participants (Tools-Export participants) – generates CSV file from all participants. You may use file for making diplomas etc.
- Export SIME start list – Exports start list in SIME start list format.

During event

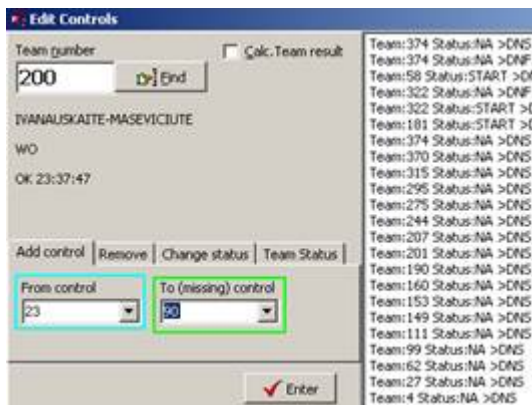
- Start program and select event
- Start Server service (mark “Server” checkbox on Server sub form)



- Start program SIReadout.exe



- Enter ROM Server IP address and port (default port is 6001). Test connection between server and SIReadout pressing Test connection button.
- Select SI station serial port and speed (if SI master station using 38400 speed – select “BSM7 38400”).
- Select printer and layout driver.
- If you like to print out speed, select min/km or km/h
- To start readout press Start button
- Edit results and team status - select Edit Controls from menu (F5)



- Type team number and press ENTER
- Select tab:
 - Add control – to add missed or not working control – select from control team goes to missing control.
 - Remove – removes control from team
 - Change status – Change team control status
 - OK-Read – normal control
 - Man-NoTime – if control time is wrong or manually added control
 - DQ – this control is disqualified and team don't get points for this
 - NA – Not defined control – no points for team and don't show in controls visit list
 - Team Status – change team status manually
 - OK – team status is OK, points are calculate
 - LATE – team was in course over class maximum+penalty time
 - OutOfBounds – if team is out of bounds
 - DNF – W/D – if team did not finished or withdrawal
 - DQS – Team is disqualified by organiser
 - DNS – Team not started
- If Calc. Team result is checked then after submitting result program will over calculates team results and points.
- Mark started participants- (Tools menu – **Load started**)
 - Select CSV file with started chip numbers. File format is: StationNR; ChipNumber; Time (HH:MM.SS,kk)*Time is optional*. You may use SI Config or SIBackupReader program to read out started SI cards from check stations.
 - Program will mark all started members as Started
 - Use DB editor for making not started runners report (NotStartedRunnersList.sql)
 - Change not started Teams statuses to DNS

After event

- Print results



- Before print out results you had to calculate results - select from Result menu Calculate (CTRL+F5). If you like to recalculate all results press Yes, if only new results press No button.
- To generate result list select from menu Reports (F6)
 - Results-table: basic report in table, only Teams positions, results and position in sub class(es).
 - Results-splits: teams results with split times
 - Results-web: generates detail results for web. All files for web are in event subfolder web. It could take time.
 - Statistics: Controls visit statistics
 - Winners: makes basic report to screen (as Result-table) and also winners list in CSV format into event folder (winners.csv). It's possible to use this file for printing diplomas using MS Word mail merge functionality.

Nb! If you publish correctly results on webpage, copy also *.css files to web server (to the same folder where result files)

- Export (XML) – exports XML file. You may use generated XML file as input for other programs (RouteGadget etc)
- Export (RogainRoute) – exports files for RogainRoute program.

From:
<http://tak-soft.com/dokuwiki/> - **Tak-Soft juhendid**

Permanent link:
<http://tak-soft.com/dokuwiki/doku.php?id=osport:multisportmanager&rev=1331214206>

Last update: **2016/03/01 18:30**

